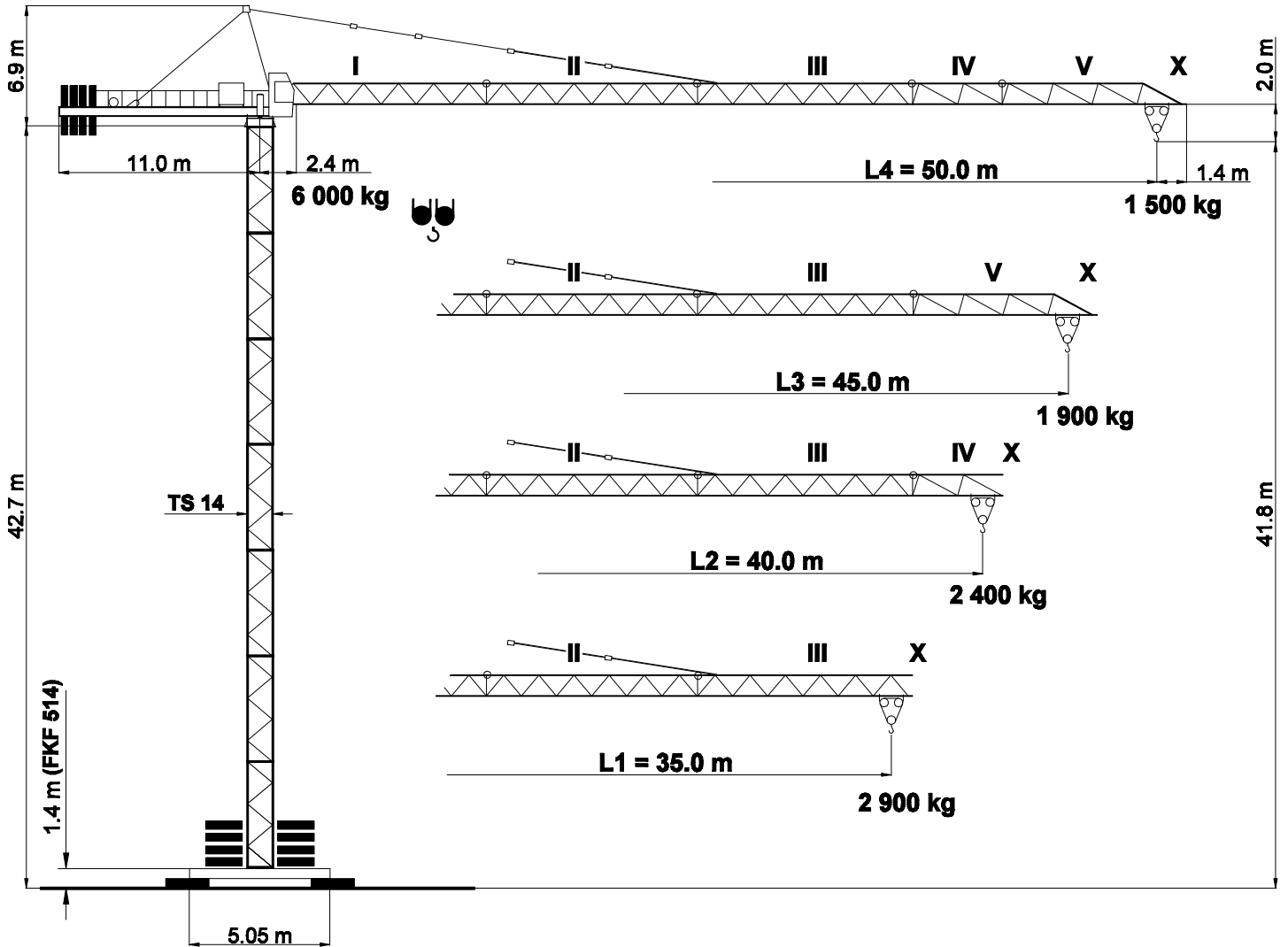
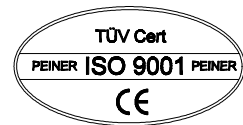


DIN 15018	H1 / B3
BGL 2125	0090
Max. Tragfähigkeit Lifting capacity Force de levage	6.0 t

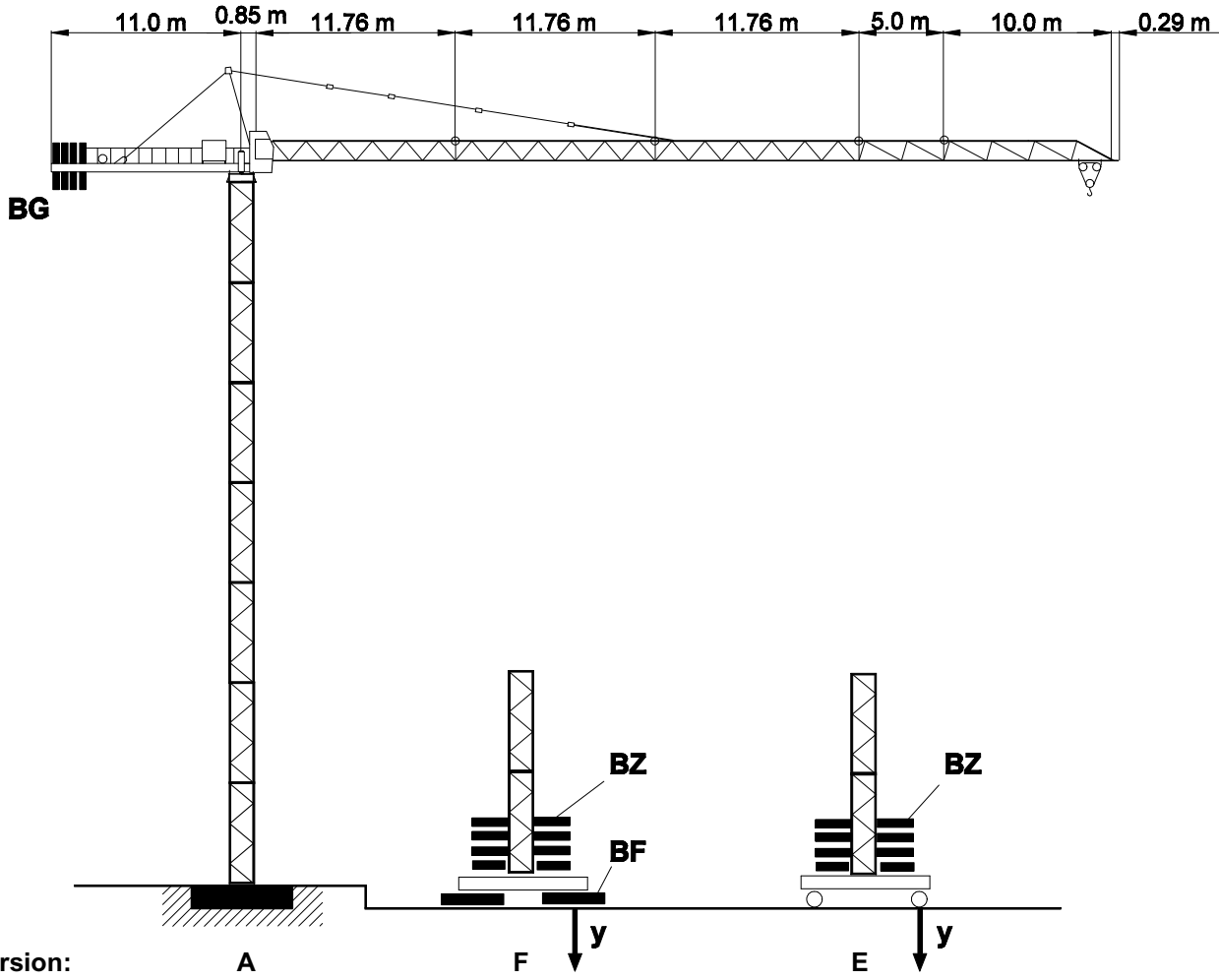
# PEINER SK 96/1



Unsere Vertretung:  
Our representative:  
Notre représentant:

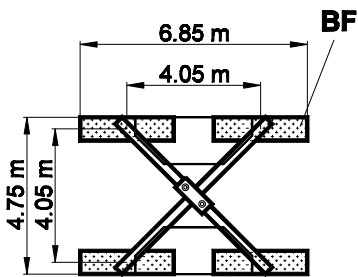
# SK 96/1 Turmkombinationen, Hakenhöhen, Eckkräfte, Zentralballast

Combinations of tower section, hook heights, forces acting per corner, base ballast  
 Combinations possibles et hauteurs sous crochet, pressions par coin, contrepoids central

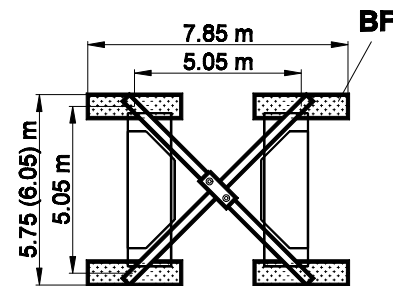


Version:

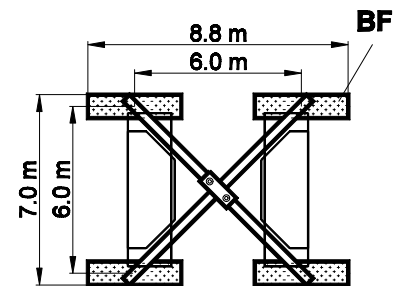
**FK 414**



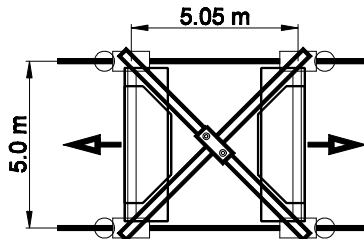
**FK 514 / 519**



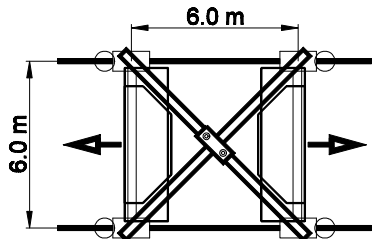
**FK 619**



**FKF 514 / 519**



**FKF 619**

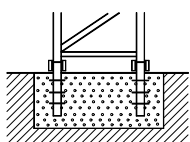


**Bodenauflagen**

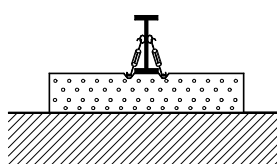
Ground support  
Support sol

Version:

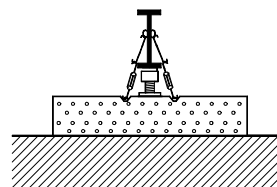
**A**



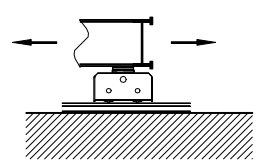
**F**



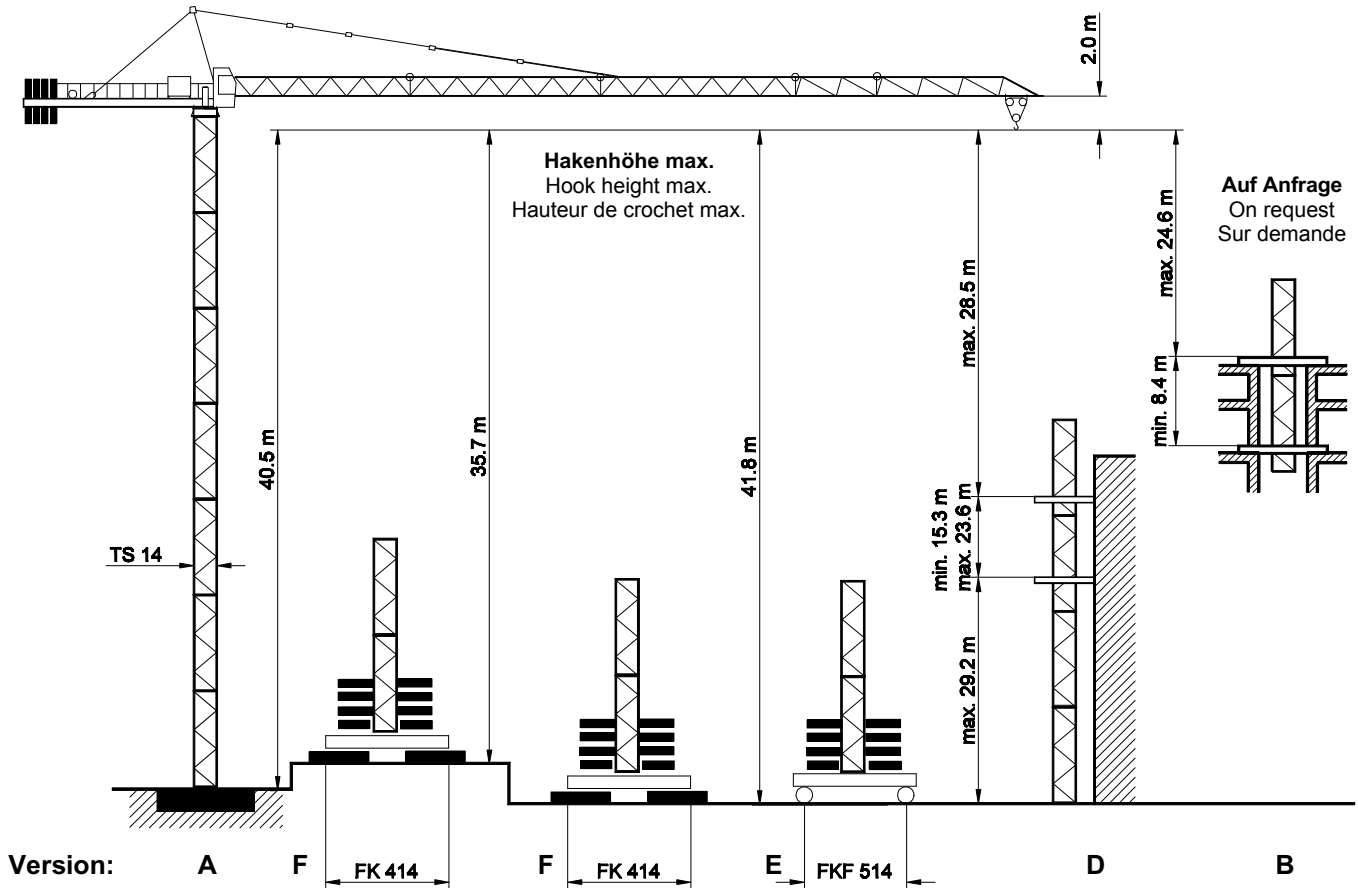
**F / SP**



**E**



# SK 96/1 Turm / Tower / Tour TS 14



TS 14		Version A		Version F						Version E					
Turm / Tower / Tour TS 14.3   TS 14.4		HK	HK	BZ + BF	y		HK	BZ + BF	y		Turm / Tower / Tour TS 14.3   TS 14.4		BZ	y	
5.9 m   11.8 m		m	m	t	i.B.	a.B.	m	t	kN	kN	5.9 m	11.8 m	t	kN	kN
1 x TSV 14.3		40.5					41.8	53.0	418	529	2 x TSV 14.3		52.2	457	529
6 x TS 14.3											5 x TS 14.3				
6 x TS 14.3	3 x TS 14.4	34.6	35.7	70.8	471	501	35.9	43.0	371	402	6 x TS 14.3	3 x TS 14.4	42.2	403	408
5 x TS 14.3		27.7	29.8	50.8	398	374	30.0	33.0	327	312	5 x TS 14.3		32.2	351	319
4 x TS 14.3	2 x TS 14.4	22.8	23.9	40.8	352	292	24.1	23.0	284	230	4 x TS 14.3	2 x TS 14.4	22.2	300	236
3 x TS 14.3		16.9	18.0	30.8	308	263	18.2	23.0	267	226	3 x TS 14.3		22.2	281	232
2 x TS 14.3	1 x TS 14.4	11.0	12.1	30.8	290	259	12.3	23.0	252	222	2 x TS 14.3	1 x TS 14.4	22.2	264	228
1 x TS 14.3		5.1	6.2	30.8	275	255	6.4	23.0	238	218	1 x TS 14.3		22.2	249	225
Fundament Foundation Fondaton 5.6 x 5.6 x 1.2 m		Fundamentkreuz Cruciform base Croix de fondation						Fundamentkreuz, fahrbar Cruciform base, railgoing Croix de fondation, mobile							
		FK 414			FK 514		FKF 514								
Fundamentfüße Fixing angles Ancres de fondation 4 x FF 10/14		BF 4 x 2.7 t		BZ Block 5.0 t		BF 4 x 2.7 t		BZ Block 5.0 t 6.1 t			Fahrschemel / bogie gerade / straight / droite F 320				

TS 14.3 = 5.9 m

TS 14.4 = 11.8 m

TSV 14.3 = 5.9 m



# SK 96/1

# Ausladung und Tragfähigkeit / Radius and capacity / Portée et charge

Ausleger Jib Flèche	Max. Tragfähigkeit max. capacity charge max.	Ausladung (m) und Tragfähigkeit (t) Radius (m) and capacity (t) Portée (m) et charge (t)															
		17	19	21	23	25	27	29	31	33	35	37	40	42	45	47	50
m	6.0 t																
L4 50.0	2.4 - 15.3 m	5.32	4.69	4.19	3.78	3.44	3.15	2.90	2.68	2.49	2.32	2.25	1.98	1.86	1.71	1.62	1.50
L3 45.0	2.4 - 16.6 m	5.84	5.15	4.60	4.16	3.78	3.46	3.19	2.95	2.75	2.57	2.40	2.19	2.07	1.90		
L2 40.0	2.4 - 17.9 m		5.61	5.01	4.53	4.12	3.78	3.48	3.23	3.03	2.81	2.63	2.40				
L1 35.0	2.4 - 18.4 m		5.78	5.17	4.67	4.25	3.90	3.60	3.33	3.10	2.90						

## Geschwindigkeiten / Speeds / Vitesses

FU 4-60/4		v = 80 m / min.	4.0 kW	400 V 50 Hz 3 Ph
SR 5-90/3		v = 0 → 25 m / min.	2 x 5.0 kW	
K SRA 55/3		v = 0 → 0.75 min <sup>-1</sup>	2 x 4.4 kW	

HK max. = 90 m      2 - Lagen / 2 - layers / 2 - couches

Type PU 24-30/3 24.0 kW			→ 65 m / min	1 500 kg		→ 32 m / min	3 000 kg	Motorenleistung ges. Total motor output Puisissance moteur (ohne/without/sans SR 5-90/3) ~ 35 kW
			→ 31 m / min	3 000 kg		→ 16 m / min	6 000 kg	
			→ 7 m / min			→ 3 m / min		

HK max. = 85 m      2 - Lagen / 2 - layers / 2 - couches

Type FU 34-30/5 34.0 kW		<p>Traglast [t] vs Geschwindigkeit [m/min]</p>	<p>Traglast [t] vs Geschwindigkeit [m/min]</p>		Motorenleistung ges. Total motor output Puisissance moteur (ohne/without/sans SR 5-90/3) ~ 45 kW
					Anschlußleistung Connected power Puisissance installée 50 kVA

## Gegengewichtsballast / Counterweight / Contrepoids

Ausleger / Jib / Flèche		L 1	L 2	L 3	L 4
Gegengewicht Counterweight Contrepoids	BG	10 650 kg	11 300 kg	11 300 kg	12 600 kg
	[t]	3 x 2.50 1 x 3.15	2 x 2.50 2 x 3.15	2 x 2.50 2 x 3.15	4 x 3.15