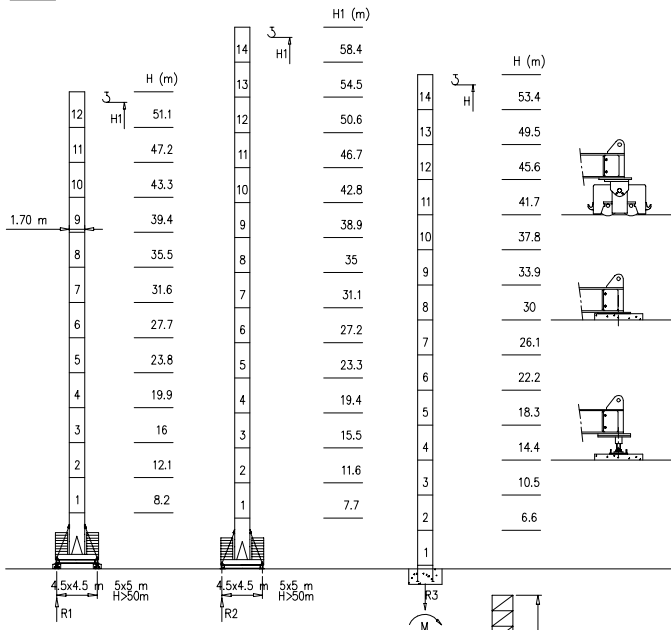


- \blacksquare S1700 - 1.70x1.70 m
- \circ S2050 - 2.05x2.05 m
- \circ
- \circ

Torre/Reazioni - Masts/Reactions - Mat/Réactions - Maste/Eckdrücke - Mástil/Reacciones - Tramo/Reacções

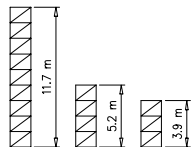
S1700

33 m → 58 m

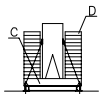


H=46-56 m	
R1	106 t
R2	106 t
R3	95 t
M	336 tm

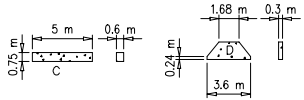
H=0-45 m	
R1	89 t
R2	88 t
R3	74 t
M	194 tm



Peso zavorra - Ballast weight - Poids du lest - Ballastgewicht - Peso de lastre



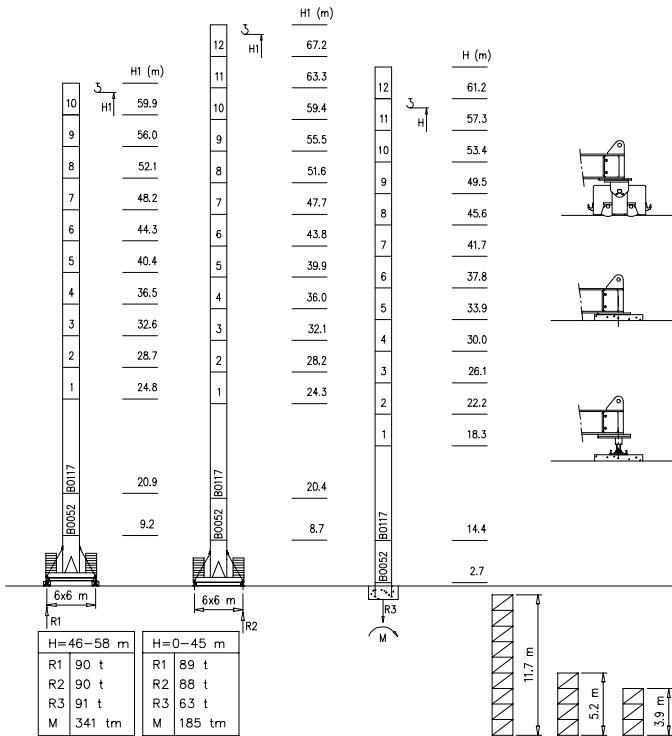
H	n°	Tot.
0-35 m	2C+18D	60800 kg
36-45 m	2C+22D	72000 kg
46-58 m	2C+32D	105000 kg



Torre/Reazioni - Masts/Reactions - Mat/Réactions - Maste/Eckdrücke - Mástil/Reacciones - Tramo/Reacções

S2050

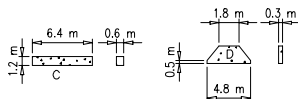
33 m → 58 m



Peso zavorra - Ballast weight - Poids du lest - Ballastgewicht - Peso de lastre



H	n*	Tot.
0-55 m	2C+ 16D	102320 kg
56-67 m	2C+ 18D	112610 kg



Curve di carico - Courbes de charges - Load diagrams - LastKurven - Curvas de cargas

Pmax 3000 kg

	22000 kg	58 m	3.5	29	30	32	34	36	38	40	42	44	46	48	50	52	54	56	58	m
			3000	3000	2940	2820	2640	2470	2320	2190	2070	1960	1860	1770	1680	1600	1530	1460	1400	kg
	22000 kg	55 m	3.5	33	34	36	38	40	42	44	46	48	50	52	54	55	m			
			3000	3000	2870	2780	2620	2470	2340	2210	2100	2000	1910	1820	1740	1700	kg			
	19560 kg	50 m	3.5	39	40	42	44	46	48	50	m									
			3000	3000	2960	2810	2660	2530	2410	2300	kg									
	17115 kg	44 m	3.5	37	38	40	42	44	m											
			3000	3000	2970	2900	2740	2600	kg											
	14670 kg	38 m	3.5	35	36	38	m													
			3000	3000	2980	2900	kg													

Pmax 6000/3000 kg

	22000 kg	58 m	3.5	18	20	22	24	26	28	30	32	34	36	38	40	42	44	46	48	50	52	54	56	58	m
			6000	6000	4900	4200	3780	3460	3180	2940	2720	2540	2370	2220	2090	1970	1860	1760	1670	1580	1500	1430	1360	1300	kg
	22000 kg	55 m	3.5	19	20	22	24	26	28	30	32	34	36	38	40	42	44	46	48	50	52	54	55	m	
			6000	6000	5400	4680	4250	3890	3580	3310	3080	2870	2680	2520	2370	2240	2110	2000	1900	1810	1720	1640	1600	kg	
	19560 kg	50 m	3.5	22	24	26	28	30	32	34	36	38	40	42	44	46	48	50	m						
			6000	6000	5300	4650	4280	3970	3690	3450	3230	3040	2860	2710	2560	2430	2310	2200	kg						
	17115 kg	44 m	3.5	22	24	26	28	30	32	34	36	38	40	42	44	m									
			6000	6000	5200	4540	4190	3880	3610	3370	3160	2970	2800	2640	2500	kg									
	14670 kg	38 m	3.5	22	24	26	28	30	32	34	36	38	m												
			6000	6000	5100	4400	3960	3670	3410	3180	2980	2800	kg												
	14670 kg	33 m	3.5	23	24	26	28	30	32	33	m														
			6000	5000	4750	4350	3770	3480	3350	3300	kg														

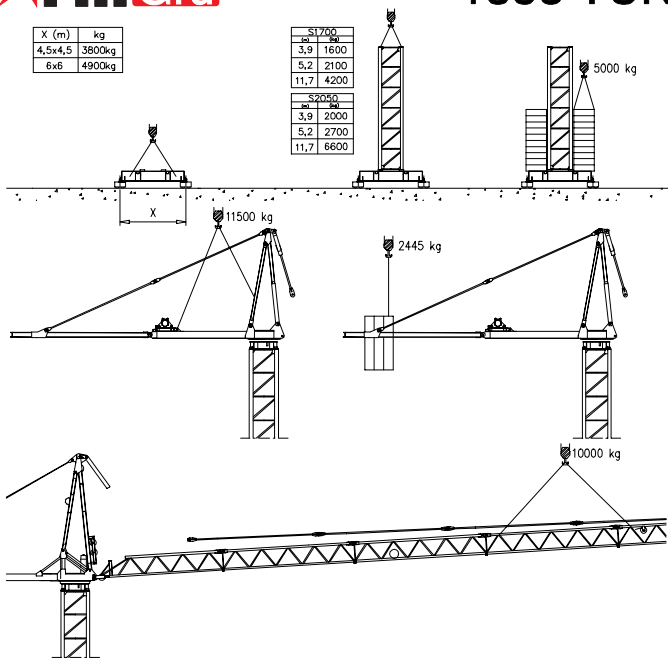
Pmax 6000 kg

	22000 kg	58 m	3.5	18	20	22	24	26	28	30	32	34	36	38	40	42	44	46	48	50	52	54	56	58	m
			6000	6000	4900	4200	3780	3460	3180	2940	2720	2540	2370	2220	2090	1970	1860	1760	1670	1580	1500	1430	1360	1300	kg
	22000 kg	55 m	3.5	19	20	22	24	26	28	30	32	34	36	38	40	42	44	46	48	50	52	54	55	m	
			6000	6000	5400	4680	4250	3890	3580	3310	3080	2870	2680	2520	2370	2240	2110	2000	1900	1810	1720	1640	1600	kg	
	19560 kg	50 m	3.5	22	24	26	28	30	32	34	36	38	40	42	44	46	48	50	m						
			6000	6000	5300	4650	4280	3970	3690	3450	3230	3040	2860	2710	2560	2430	2310	2200	kg						
	17115 kg	44 m	3.5	22	24	26	28	30	32	34	36	38	40	42	44	m									
			6000	6000	5200	4540	4190	3880	3610	3370	3160	2970	2800	2640	2500	kg									

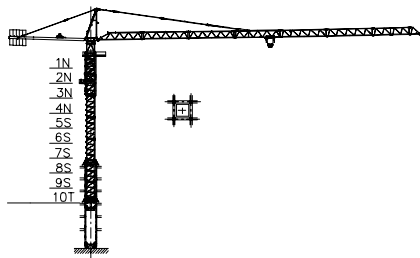
X (m)	kg
4,5x4,5	3800kg
6x6	4900kg

S1700	
mm	kg
3,9	1600
5,2	2100
11,7	4200

S2050	
mm	kg
3,9	2000
5,2	2700
11,7	6600



Gru in cavedito - Climbing crane - Télescopage sur dalles - Kletterkrane in Gebäude - Telescopage gruas trepadoras - Telescopagem sobre lajes



Number of tower section	H (m.)
5S+2N+T	33.40
5S+3N+T	37.30
5S+4N+T	41.20

N = Standard mast element
 T = Telescopic element
 S = Special mast element

Sollevamento S20.40 e V20.40 Hoisting Levage Heben Elevación Elevação			1a	4 m/min	3000 kg	14.7 kW	S20.40 32 kVA V20.40 28 kVA		
			2a	20 m/min	3000 kg				
			3a	40 m/min	1500 kg				
			1a	2 m/min	6000 kg				
			2a	10 m/min	6000 kg				
			3a	20 m/min	3000 kg				
Sollevamento S2560 e V25.60 Hoisting Levage Heben Elevación Elevação			1a	7 m/min	3000 kg	18.5 kW	S25.60 38 kVA V25.60 33 kVA		
			2a	28 m/min	3000 kg				
			3a	56 m/min	1500 kg				
			1a	3.5 m/min	6000 kg				
			2a	14 m/min	6000 kg				
			3a	28 m/min	3000 kg				
Sollevamento V45.60 Hoisting Levage Heben Elevación Elevação			1a	2 m/min	6000 kg	33 kW	V45.60 50 kVA		
			2a	20 m/min	6000 kg				
			3a	31 m/min	5000 kg				
			4a	46 m/min	3200 kg				
			5a	60 m/min	2500 kg				
			Carrello Trolleying Distribution Katzfahren Distribución Distribuição					1a	5 m/min
2a	25 m/min	6000 kg							
3a	50 m/min	3000 kg							
Rotazione Slewing Orientation Schwenken Orientación Rotação	1a	0 → 0.2				giri/min tr/min rp/min	4.4 kW @ 1200rpm n° 2 x 2.2 kW		
	2a	0 → 0.6							
	3a	0 → 0.9							
Traslazione Travelling Translation Kranfahren Traslación Translação			1a	OP 0 → 5	7.5 kW				
			2a	0 → 20					

Rete elettrica – Réseau – Mains supply – Netzstrom – Red – Rede electrica

400V – 50 Hz

