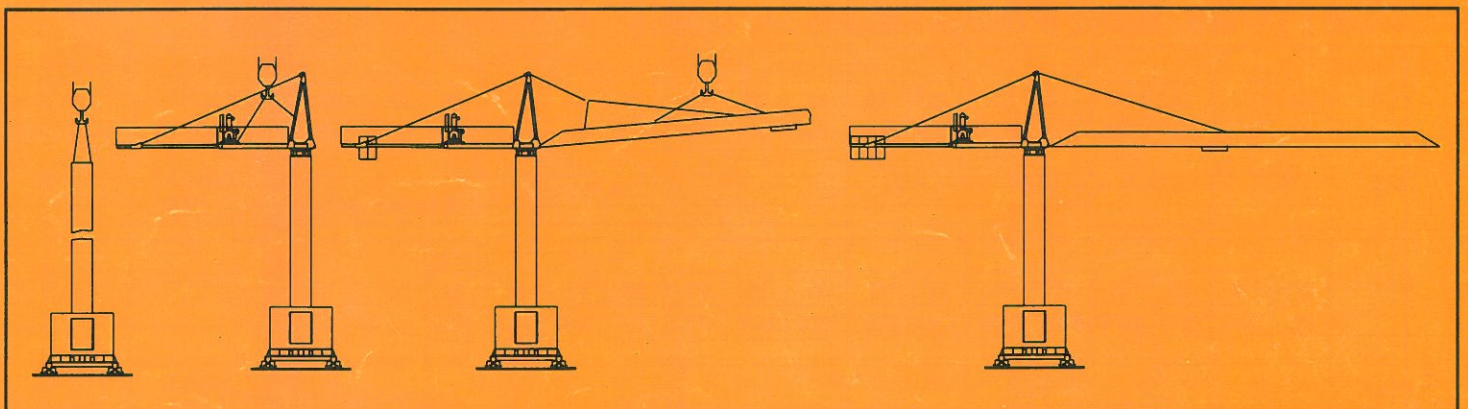
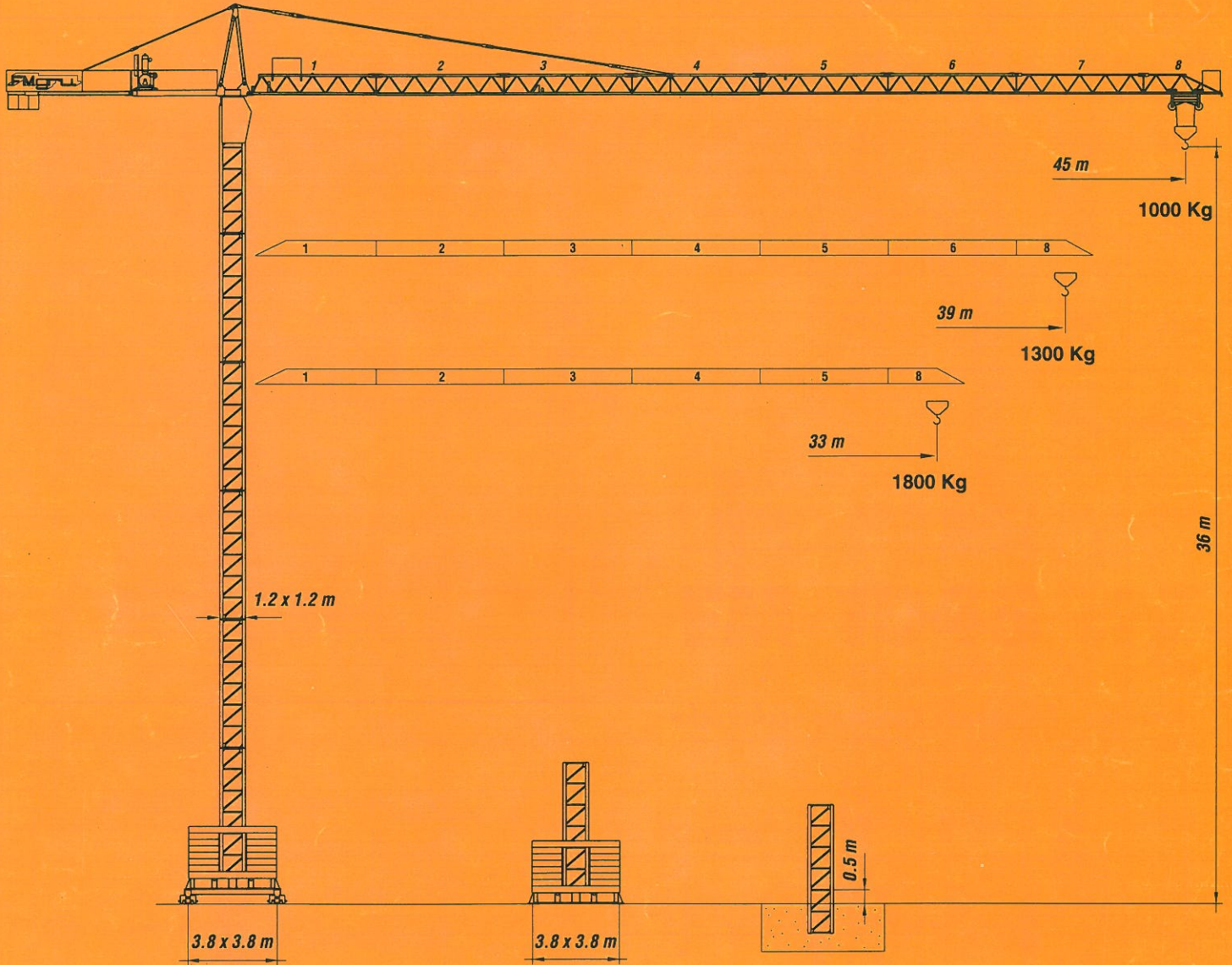
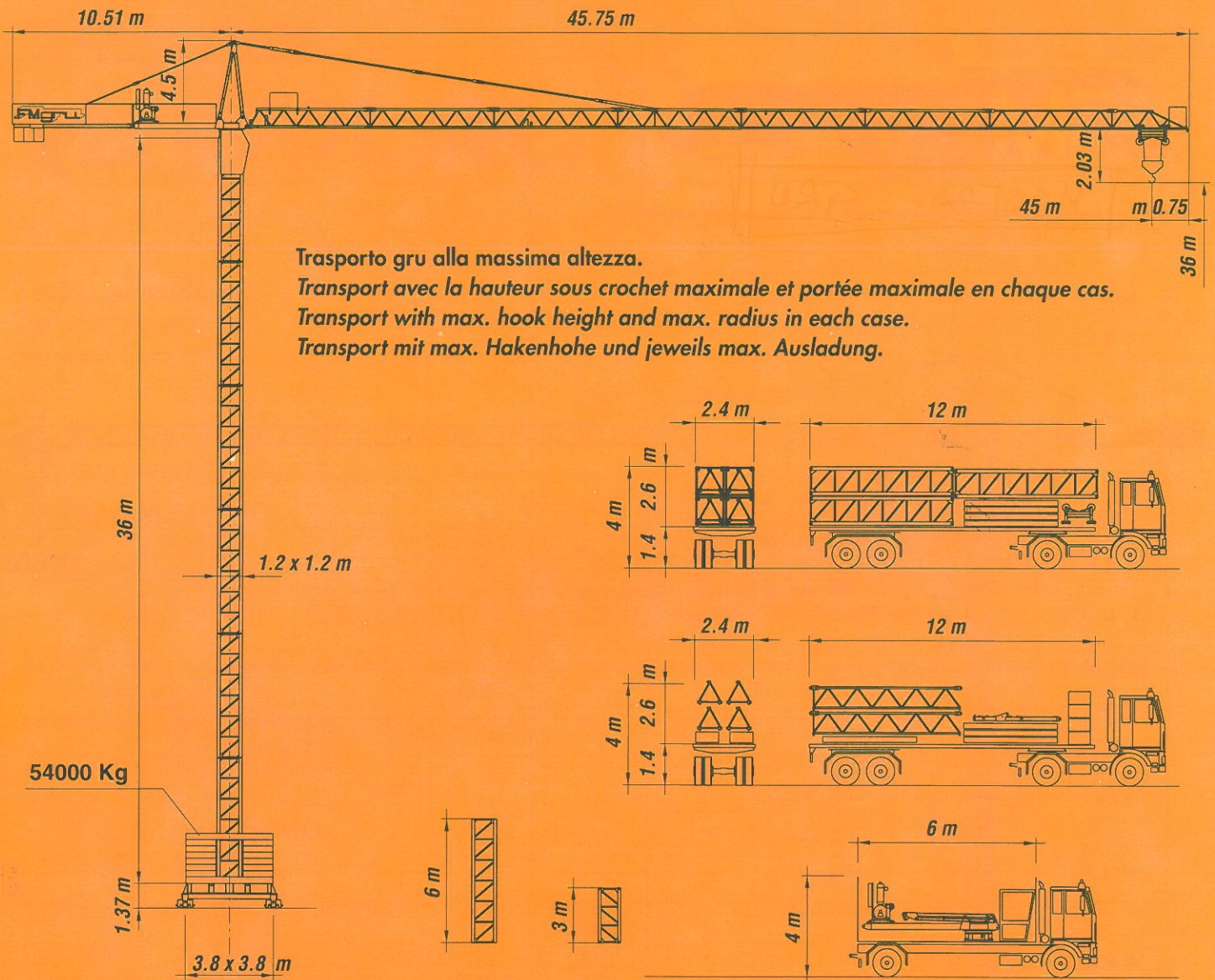




FM 1045 cty





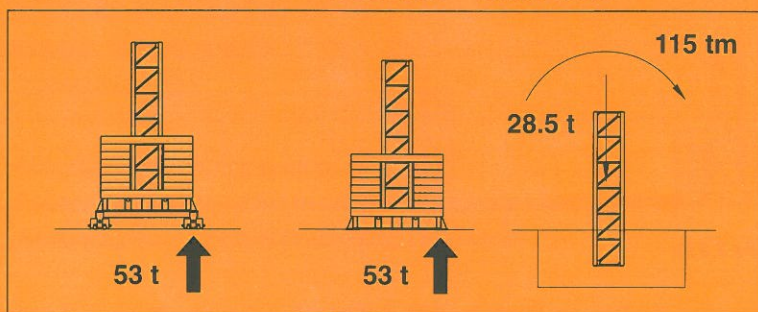
Trasporto gru alla massima altezza.

Transport avec la hauteur sous crochet maximale et portée maximale en chaque cas.

Transport with max. hook height and max. radius in each case.

Transport mit max. Hakenhöhe und jeweils max. Ausladung.

Reazioni - Réactions - Reactions - Eckdrucke



Peso gru a vuoto 27000 Kg

Poids de construction

Dead weight

Konstruktionsgewicht

Bracci e portate - Portée et charge - Radius and capacity - Ausladung und Tragfähigkeit

m	13	15	17	19	21	23	25	27	29	31	33	35	37	39	41	43	45
Kg	4000	3900	3420	3000	2600	2350	2000	1900	1750	1620	1500	1400	1250	1200	1120	1050	1000

S

Argano sollevamento S20

m	19	21	23	25	27	29	31	33	35	37	39	41	43	45
Kg	3000	2600	2350	2000	1900	1750	1600	1500	1400	1250	1200	1100	1050	1000

S

Argano sollevamento S25