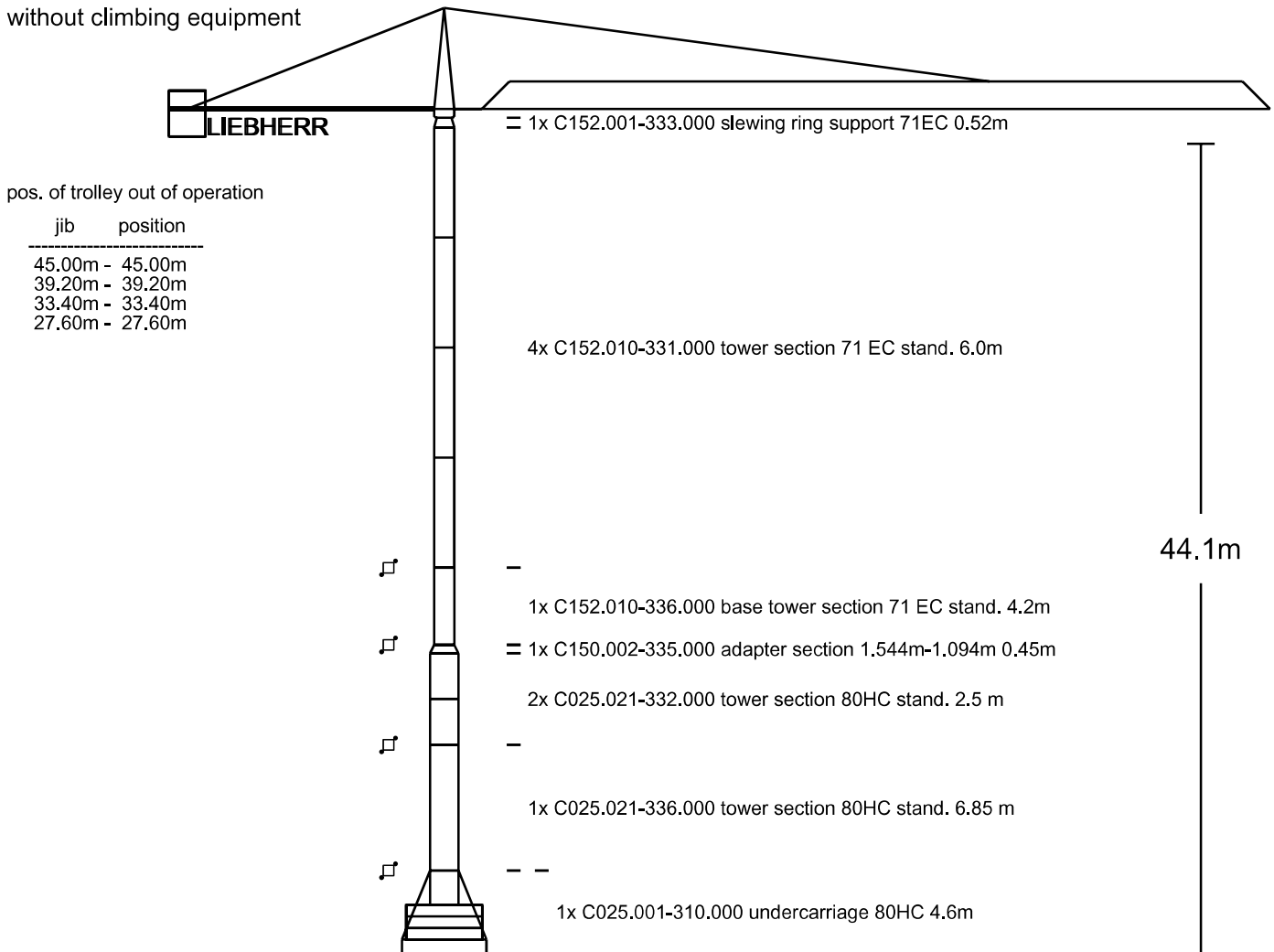


71EC on tower 71EC/80HC undercarriage 80HC 4.6m

without climbing equipment



Hook height: 44.10 m Track: 4.60 m Wheel gauge: 4.60 m st93dV1.31:V1.31

Radius [m]	MD [kNm]	Central- ballast [to]	Corner forces in operation [kN]					Corner forces out of oper. [kN], MD = 0				
			Corner	Position of jib			H.-force [kN]	Corner	Position of jib			H.-force [kN]
				1	2	3			1	2	3	
45.00	116	33.516	A	194	287	78	31	A	157	343	42	61
			B	404	382	338		B	457	343	343	
			C	222	129	338		C	157	42	343	
			D	11	34	78		D	0	42	42	
39.20	95	39.328	A	204	298	90	30	A	194	345	63	61
			B	415	390	350		B	428	345	345	
			C	235	141	350		C	194	63	345	
			D	24	49	90		D	0	63	63	
33.40	85	39.328	A	192	313	65	29	A	169	346	49	61
			B	440	399	360		B	451	346	346	
			C	219	112	360		C	169	49	346	
			D	0	27	65		D	0	49	49	
27.60	65	39.328	A	195	311	67	29	A	186	332	61	61
			B	433	395	357		B	414	332	332	
			C	221	113	357		C	186	61	332	
			D	0	29	67		D	0	61	61	